

**OFFICERS &
BOARD OF DIRECTORS**

PRESIDENT:
BARBARA C. GORDON

VICE PRESIDENT:
LOUISE K. KAUFMAN

TREASURER:
STEVEN KLEINMAN

ASSISTANT TREASURER:
DAVID KLAU

SECRETARY:
LINDA COHN

BOARD 2010-2013
BETTY HOFFMAN
ROCHELLE FIERSTON
LOEL GOLDBLATT
DAVID NEMIROV
SUSAN VINER
JEREMY WEINGAST

BOARD 2011-2014
CATHERINE DAWSON*
DAVID HARRIS
LEONARD HOLTZ
BRENDA MILLER
DAVID SILVER

BOARD 2012-2015
MICHAEL COHEN
DANIEL FINE
LANCE GOLDBERG
SANDRA RULNICK
ELLIOTT TERTES*
MORTON L. WEINSTEIN*

HONORARY DIRECTORS

GLORIA BEIN
ELEANOR CAPLAN
HON. HENRY COHN
MARTIN EPSTEIN
FRAN FELTMAN
PHILIP FELTMAN
JOE FOX
EDITYH GITTLEMAN
LILLIAN MARLOW
LOIS SHEKETTOFF
FRANCES E. WALTMAN
DR. IRVING WALTMAN
STANLEY WIESEN

PAST PRESIDENTS

EMMA COHEN**
DR. M. DELOTT
GARBER**
MORRIS HANDLER**
JOSEPH HURWITZ
HON. JERRY WAGNER
DR. LEON CHAMEIDES
DR. SEYMOUR
SALTZMAN**
DAVID KLAU
LEA RUBENSTEIN
ARTHUR NASSAU
ELLIOTT B. POLLACK

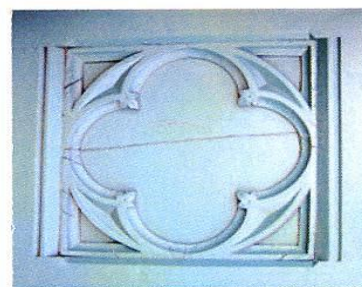
EXECUTIVE DIRECTOR:
ESTELLE KAUFER

* NEW BOARD MEMBER
** DECEASED

Back to the *Old*
Neighborhoods



Travel Through
200 Years Of
Jewish History
In Hartford



For more information, please visit our website at www.jhsg.org

President's Message



Dear Members,

As president of the Jewish Historical Society of Greater Hartford, I am proud of so many of our accomplishments and activities, but let me focus on a recent event, which took place on Sunday June 24th. The Society sponsored a guided bus tour of the old neighborhoods of Hartford, places where many of us grew up, shopped, played and attended school. To me, this trip epitomized exactly what the JHSGH is all about—restoring not only in our archives, but also through real life experiences, the wonderful past many of us shared. Even if you didn't grow up here, there is much to learn about and enjoy.

Organized by executive director Estelle Kafer and project manager Gale Shapiro, forty of us reminisced for three and a half hours—a voyage which evoked wonderful memories of our youth. We drove from the Charter Oak Cultural Center (the original home of Congregation Beth Israel) to the old Talmud Torah on Pleasant Street, past the former site of the Crown Market, Maxwell Drug, the Lenox theater, the Northwest School—all on Albany Avenue; and Weaver High on Ridgefield Street. The highlight of our trip was visiting the former Emanuel and Agudas Achim synagogues. As the bus turned around in Keney Park, a chorus of “this was where we all met during Yom Kippur recess” came from the group as memories and reminiscences of the good all days came flooding back. Walking into the two former synagogue buildings was awesome and when Gale played a tape recording of Cantor Arthur Koret's voice in The Emanuel sanctuary—it was a very emotional moment.

From Blue Hills Avenue to Albany Avenue, to Westbourne Parkway, to Bedford Street and the old Talmud Torahs I'll leave the rest for you to experience for yourself on our next planned tours in October and in November. It's a journey you won't want to miss.

Wishing you the happiest and healthiest New Year, L'shana Tovah!

Barbara

F A L L 2 0 1 2 C A L E N D A R

Wednesday, September 12, 2012 – 5:30 p.m.

Mark Twain's Jews – A Talk by Dr. Dan Vogel
The Mark Twain House & Museum, co-sponsored by
JHSGH

Monday, September 24, 2012 – 6:15 p.m.

JHSGH Board Meeting, CSB

Thursday, September 27, 2012 – 7:00 p.m.

2013 Russia trip information session, CSB

Thursday, October 4, 2012 – 5:30 p.m.

Book talk by Daniel Sterner, author of “A Guide to
Historic Hartford, Connecticut”, Chase Gallery, JCC

Sunday, October 14, 2012 – 9:30 or 1:30

“Back to the Old Neighborhoods” bus tour
Leaves from CSB (see website for details:
www.jhsg.org)

Monday, October 22, 2012 – 7:00 p.m.

JHSGH Board Meeting, CSB

Thursday, October 25, 2012 – 2:00 p.m.

“Over the River and Up the Road – The Jews of
Manchester”
Talk by Sissy Seader, Mandell JCC

Thursday, November 8, 2012 – 1:00 p.m.

Program on immigrant war veterans, State Capitol

Sunday, November 11, 2012 – 9:30 or 1:30

“Back to the Old Neighborhoods” bus tour
Leaves from CSB (see website for details:
www.jhsg.org)

Tuesday, November 27, 2012 – 7:00 p.m.

JHSGH Board Meeting, CSB

Mark Twain's Jews:

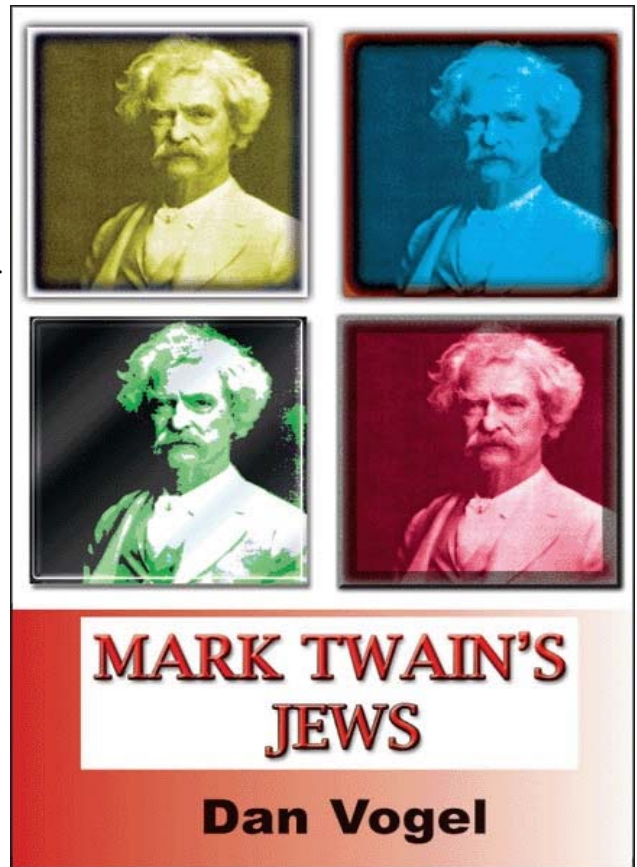
A Talk by Dr. David Vogel

Wednesday, September 12, 2012
5:00 p.m. Wine reception
5:30 p.m. lecture.

The Mark Twain House & Museum
351 Farmington Avenue
Hartford, Connecticut

Was Mark Twain an anti-Semite? It's not well-known that the great American author mentioned Jews dozens of times in letters, notebook entries, autobiographical dictations, sketches, essays and articles, culminating in his major 1899 essay, "Concerning the Jews."

In his 2006 book *Mark Twain's Jews*, scholar Dan Vogel tries to set the record straight by considering nearly every mention of the word "Jew" in Twain's canon. Maintaining a scrupulous objectivity and impeccable scholarship, he comes up with some surprising and groundbreaking conclusions.



Sponsored by the Mark Twain House & Museum and the Jewish Historical Society of Greater Hartford. Part of The Mark Twain House & Museum's lecture series, "The Trouble Begins at 5:30". **FREE and open to the public**



Gloria Gay Dress Shop, Hartford, CT 1947

**A NEW EXHIBIT COMING TO
THE SOCIETY
October 2012 – March 2013**

"THE DOWNTOWN HARTFORD EXPERIENCE, 1930s – 1960s"

In its heyday, Hartford's downtown area was "The" place to go for shopping, dining and entertainment. From large department stores such as G. Fox & Co. to smaller establishments such as the Gloria Gay Dress Shop, this exhibit will include historic photos

from the Society's archives and the Hartford History Center, along with memories from the Society's oral histories. Co-sponsored by the Hartford History Center of the Hartford Public Library. *Do you have any photos of a downtown Hartford business you can share for the exhibit? Please contact us at #860-727-6171.*

"Over the River and up the Road" - The Jews of Manchester

Thursday, October 25, 2012 – 2:00 p.m. , Mandell JCC

Presented by Sissy Seader

Free and open to the public

Sissy Seader, a long time Manchester resident will speak and show photos about the founding fathers of Manchester's Jewish community and how, as more Jews found their way across the river, it became a vibrant and active place for Jews to live.

OH, WHAT A NIGHT!

JHSGH 40TH ANNIVERSARY GALA

Although the October snowstorm turned off the lights for many days and forced the postponement of our 40th Anniversary Gala, the rescheduled event on May 6th was a wonderful celebration of the Society's past, present and future. Over 230 people came together that evening to remember those who had the foresight to establish the organization, to honor three very special volunteers--Gloria Bein, David Klau and Lillian Marlow, and to learn what the future holds for the Society.



JHSGH Board Members



Marsha Lotstein, First Society Director with Honorees

This event would not have been possible without the time, energy and support of so many and we would like to acknowledge them here:

Gala Committee: Eleanor Caplan, Linda Cohn, Rochelle Fierston, Risa Filkoff, Dr. Leon Chameides, Barbara Gordon, Louise Kaufman, Eleanor Mayer and Sandra Rulnick.

Abel Caterers
Beth El Temple and staff .
Phil Handler
Victoria Stuart
Marcy Cain and Bob Kagan

Eleanor and Allan Mayer
Elliott B. Pollack
Janet Poitras
Magevet A Capella Group
Randy Anagnostis



Guests enjoying the cocktail hour



Director Estelle Kafer with Honorees



Society history film shown before dinner

We have many people to thank, but our deepest gratitude goes to the members of the Heritage Society, dedicated individuals who made a special donation to the Society in honor of its 40th anniversary.

HERITAGE SOCIETY

HISTORIAN

Rochelle S. and David H. Fierston
Doris and Simon Konover
Henry Zachs

ARCHIVIST

Eleanor Caplan
Naomi and Michael Cohen
Rosanne and Jack Dolinsky
Joan and Daniel Fine
Hinda N. Fisher
Merle and David Harris
Kathleen and Bradley Hoffman
Louise and Todd Kaufman

Barbara and David Klau
Deborah M. and Steven C. Kleinman
Joyce D. and Andrew J. Mandell
Reba and Arthur Nassau
Dr. Stacy Nerenstone & Morton Weinstein
Gerald A Roisman
Anja and Gene Rosenberg
Beth Schiro and Stephen Bayer



Fabulous Yale A Capella group: Magevet

A GUIDE TO HISTORIC HARTFORD, CONNECTICUT

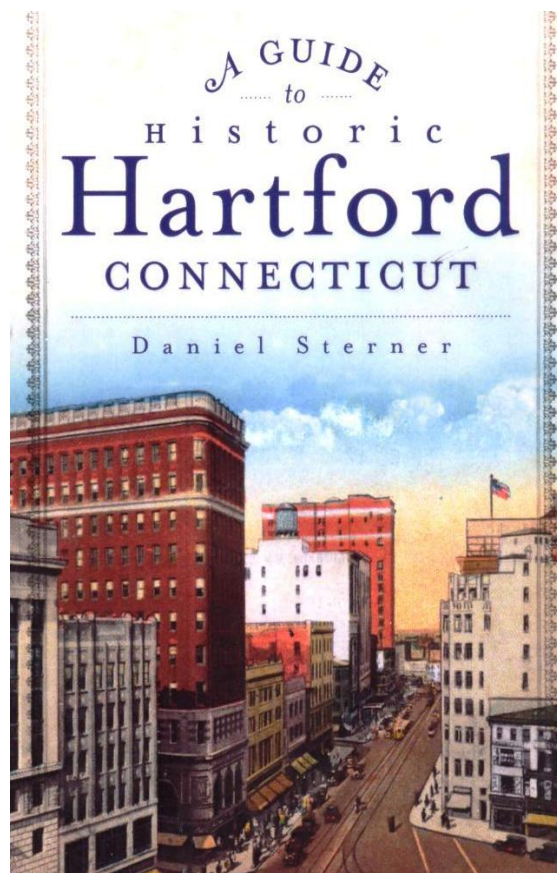
A TALK BY AUTHOR, DANIEL STERNER

Thursday, October 4, 2012, 5:30 p.m.
Chase Family Gallery, Mandell Jewish Community Center
335 Bloomfield Avenue, West Hartford

This program is free and open to the public

Join Daniel Sterner, author of *A Guide to Historic Hartford Connecticut*, for a fascinating look at the history of Hartford from its beginnings as an agrarian community to its later role as a commercial hub. As the author “leads” us on tours of several different parts of town, we will learn about the people, places and events that have shaped our city.

Daniel Sterner has been a guide at the Mark Twain House, the Harriet Beecher Stowe House and the Webb-Deane-Stevens Museum in Wethersfield. He has a degree in history from Wesleyan University and a Masters Degree in Middle Eastern Studies from the University of Chicago.



Like us on
Facebook

**Please remember to
visit us on Facebook
& Twitter!**

twitter



EQUIPMENT WISH LIST

We are very grateful to Susan and Allen Viner who donated funds for a new transcription machine. Below is a Wish List of equipment that the office needs. We would appreciate donations in any amount towards the purchase of one or more of these items.

- PowerPoint Projector for programs \$800
- Exhibit Display System for photos and exhibit panels \$1,000
- Laptop computer for use in presentations and by researchers \$800
- Color printer to reproduce photos, flyers and documents \$200
- Portable audio and video digital recorders \$200

From the Director

Dear Friends,

I hope everyone had a relaxing summer. Mine was filled with blessings; our eldest daughter gave birth to our first grandchild, our son began medical school and our second daughter started her radiology residency!

It has been a busy time for the Society. In preparation for our fall programs and projects, we have been working with consultants, collaborators, co-sponsors, volunteers, interns and researchers. With the diligent assistance of Susan Viner, project chair and Joan Walden, editor, we are finally approaching the editing and designing stage of the second volume of the North End book and can hopefully anticipate publication next spring. Our archivist, Gregory Farr, has been reaching out to various on-line research, history and academic sites, linking the JHS archive as a viable resource and increasing awareness and access to our collections. Jillian Hilderliter, a graduate student at Northeastern, has helped collect material for our upcoming exhibit "The Downtown Hartford Experience, 1930s -1960s". She has also helped launch and maintain our updated Facebook page. Victoria Stuart, a senior at Saint Joseph University, continues to input data from our oral history cassette tapes to the new finding aid program, Archivist Toolkit. Gavi Fried, a junior at Haverford College will be lending a hand with various projects during the month of September. We are very grateful for their help and interest. We sadly note the passing of Edith Gittleman and Dr. Seymour Saltzman. We fondly remember their dedication and commitment to the Society. Edith co-authored, "Days of the Talmud Torah" and Seymour was President from 1996 to 1998.

As we begin our 2012 -2013 fiscal year, we are asking for your support and generosity more than ever before. Due to Federation campaign shortfalls, our allocation has been substantially cut by 42% or \$6,600.00, compromising our daily operating needs. Please remember to send in your dues, upgrade your level if possible, check out our wish list and consider a donation for a special occasion or event. Thank you!

L'Shana Tovah! Wishing everyone a sweet and healthy New Year!

Estelle



From the Archivist

Dear Friends,

It has been my great privilege to participate in many of the ongoing projects currently unfolding at the JHSGH archives. We have begun the process of digitizing the JHSGH oral history collection, helping to preserve the legacy of interviews and community events originally captured on audio cassette tapes. So far we have processed eighty recordings, linking written transcriptions and other descriptive information to each using our new collection management database. Continuing to capture these recordings in digital format will allow for much easier access to these oral histories for researchers and other audiences alike, and, again, will help to preserve these interviews for generations to come. We also plan to share these archival holdings with the greater public on our website in the near future, adding these artifacts to our growing list of online finding aids. Publishing inventories of our collection in an online format helps to promote the Society's commitment to publically serve those interested in Jewish history and culture as it relates to the Greater Hartford area and hopefully to invite more contributions to our archival repository.

At present we have been very fortunate to receive over sixty new accessions this year, including a wide array of manuscripts, photographs, videos, oral history recordings, and artifacts. We thank all our archive donors for their special thoughtfulness in helping to preserve the history of Jewish life in Hartford, including:

- Marvin Catler — several series of manuscripts and community-related documents
- Roslyn Millstein Elston — photographs and letters documenting the travels of a Jewish woman WWII war veteran in Egypt and Palestine
- Arline Wolansky and Susan Schenker — photographs, pamphlets, and documents related to the Hartford Yeshiva
- Richard Bromberg — records and photos documenting Hartford business (Pierce Pharmacy)
- Sara Schuwolf — student essay on Zionism entitled, "The Eye of Hartford Looks Towards Zion"

Please consider contributing your historical artifacts, manuscripts, and documents to the JHSGH collection and many thanks again to all those who have participated in the life of the archives!

All the best for the New Year! G. Farr

Thoughtful Contributions

Contributions to the Jewish Historical Society are a thoughtful way of honoring or memorializing an individual, or commemorating an event, and at the same time supporting the Society.

All contributions of \$18.00 or more will be printed.

In memory of:

Herbert Abrams

Susan and Allan Viner

James Charles Filkoff

Barbara Gordon

Carol Heimer

Barbara and Mark Gordon

Mollie G. Pollack

Elliott B. Pollack

Dr. Seymour Saltzman

Eleanor Caplan

Linda A. & Henry S. Cohn

Alice W. Herrman

Lorraine and Leo Pinsky

Fran and Chick Waltman

Staff at the Probate Court Administration

In honor of:

Bobbie Klau's special birthday

Elaine Charendoff

Gloria Bein

Dr. Richard and Janet Zimmerman

Bobbie Klau, with thanks for storytelling

Cong. Beth Hillel

Dave Klau & with appreciation for Bobbie Klau's storytelling

Judy and Allen Kronick

Lil Marlow

Irma Menschell

Gloria Bein and David Klau

Hilary Freedman & Howard Zern

Gloria Bein, David Klau and Lil Marlow, for years of service to the Society

Susan and Allan Viner

David Klau, Gloria Bein

Elaine Title Lowengard

Mazel Tov to:

Judge Henry and Linda Cohn on Ilana's engagement

Susan and Allen Viner

Estelle and Dr. Sheldon Kafer on the birth of their grandson, Eitan Reiss Berger

Susan and Allen Viner

Helga Allweiss

Eleanor Caplan, for recognition by the Jewish Foundation of Greater Hartford

Susan and Allen Viner

Naomi Cohen, for receiving Gerald & Paula Steinberg

Community Service Award from SSDS

Susan and Allen Viner

General donations:

Abby Alter

Jay Frankel

Dr. and Mrs. Melvin Horwitz

Evelyn Persell

Lauren Goldstein Tafrate

Dorine and Martin Toyen

WELCOME NEW MEMBERS

Laura Berlin

David Burstein

Bob Hurvitz

Judy Singer

Frances Blumenthal

Joyce & Richard Leibert

Burton Miller

Preservation Society

Rochelle and David Fierston

Reba and Art Nassau

Stacy Nerenstone and Morton Weinstein

Chick and Fran Waltman - in honor of their sister Lillian Lewis who was born in 1916 in Hartford and always loved this area.

IN MEMORIAM



Edith Gittleman

Gloria Goldenberg

Dr. Paul Klemens

Phyllis Lappen

Dr. Seymour Saltzman

JOIN THE JEWISH HISTORICAL SOCIETY OF GREATER HARTFORD

Your membership dues not only support programs, projects and exhibits that educate and entertain, but they also help us in our efforts to preserve and archive the history of Hartford's Jewish community.

You receive benefits as well, including:

- Access to the archival collection without charge
- Staff assistance with personal research
- Discounts on events and projects sponsored by the Society
- Special invitations to new exhibits and other openings
- Discounts on Society publications
- The satisfaction of knowing that you have helped to preserve the past for future generations

Become a member and show your support for the Society's work.

WE INVITE YOU TO JOIN US

We are dedicated to collecting and preserving your historical documents, photographs and memorabilia of the Jewish community of Greater Hartford. Help preserve our rich legacy for future generations.

Become a member, support us, volunteer!

Jewish Historical Society office hours are:

Monday - Thursday, 9:30 a.m. to 4:30 p.m.

Our telephone number is (860) 727-6171

Email: jhsgh@jewishhartford.org

Website: www.jhsgh.org

The Jewish Historical Society of Greater Hartford is a beneficiary agency of the Jewish Federation of Greater Hartford.

Check one: Annual \$36 Patron \$72 Sponsor \$125

Name _____

Address _____

City/State/Zip _____

Phone _____

Email _____

Please make checks payable to **JHSGH** and mail to:

JHSGH, 333 Bloomfield Avenue,

West Hartford, CT 06117

Or go online to www.jhsgh.org to join!

Zachs Campus
JHSGH
333 Bloomfield Avenue
West Hartford, CT 06117

